



**ALASKA DIVISION OF HOMELAND SECURITY &  
EMERGENCY MANAGEMENT**



**SITUATION REPORT 19-361 • DEC 27<sup>TH</sup>, 2019**

Toll Free 1.800.478.2337

Anchorage Area 907.428.7000

SEOC 907.428.7100

<p><b><u>SEOC Preparedness Level</u></b> Level 1 – Routine Operations</p>	<p><a href="http://ready.alaska.gov">http://ready.alaska.gov</a></p>	<p><b><u>National Terrorism Advisory System:</u></b> View this site for the latest NTAS bulletin: <a href="#">You can read the new NTAS Bulletin here.</a></p>
<p><b><u>Maritime Security (MARSEC)</u></b> Level:1-Minimum Appropriate Security Measures</p>	<p><b><u>WHO Post Pandemic:</u></b> Disease activity at seasonal levels.</p>	<p><b><u>Alaska Military Installation Force Protection Level:</u></b> FPCON Bravo</p>

(Significant changes from previous situation reports are in red.)

**THREAT LEVEL CHANGES:** SEOC LEVEL 1 – ROUTINE OPERATIONS

**Significant Issues:** The SEOC is continuing to evaluate a request for disaster assistance from the Kenai Peninsula Borough (KPB) due to recent storm damages and power outages. DOT is also compiling response and repair costs for damage to several roads on the Kenai Peninsula.

Last weekend ice jam flooding of Willow Creek, in the vicinity of the Deneki Bridge, caused several homes to be evacuated. Contact has been established with Matanuska Susitna Borough OEM. MSB sent the SEOC an official local declaration of disaster emergency requesting state public and individual assistance, and other emergency resources for their response and recovery from this event. MSB has been assisting residents needing to leave and/or re-renter their homes. MSB Operations and Maintenance Department is assessing mechanical solutions to the flooding. The SEOC will evaluate this request and provide support as appropriate and continues to monitor the situation.

**Travel Alerts and Conditions**

For current driving conditions dial 511 or link to <http://511.alaska.gov/>

**Recent Earthquakes**

USGS Earthquake Information: <http://earthquake.usgs.gov/>

National Tsunami Warning Center: <http://ntwc.arh.noaa.gov/>

**Alaska Volcanoes**

**Cleveland** Alert Level: Advisory and Aviation Color Code: Yellow

**Shishaldin** Alert Level: WATCH and Aviation Color Code: Orange

**Semisopchnoi** Alert Level: Advisory and Aviation Color Code: Orange

For Alaska Volcano updates, go to: <https://www.avo.alaska.edu/>

## **Air Quality Index (AQI) Advisories**

There are currently no active advisories in effect.

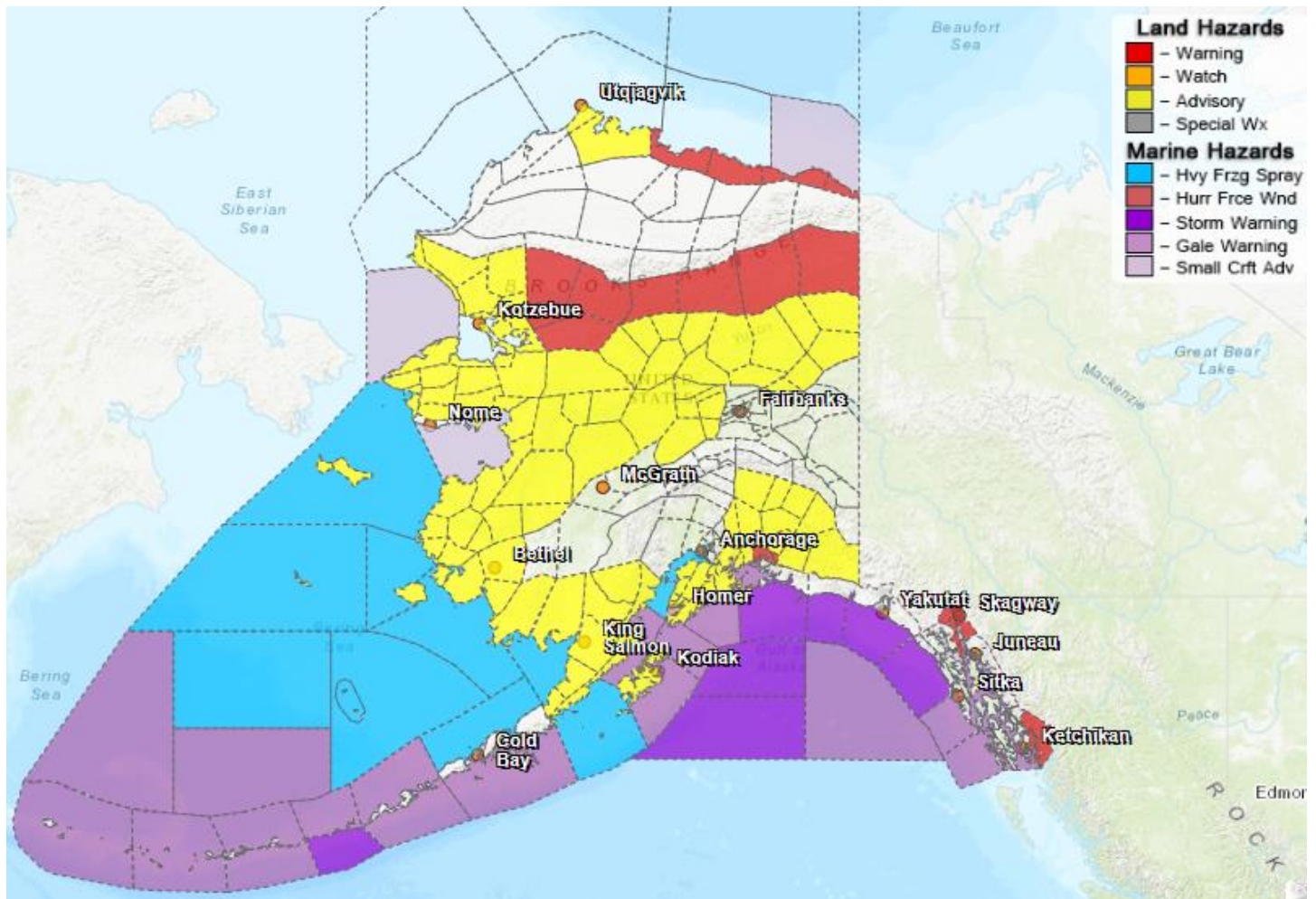
For the most up to date Air Quality Index Advisories:

<http://dec.alaska.gov/Applications/Air/airtoolsweb/Home/Index>

## **State of Alaska Department of Health and Social Services (DHSS)**

The Alaska DHSS website is located at <http://dhss.alaska.gov/Pages/default.aspx>

## **Significant Weather:**



A wind chill advisory is in effect for the Upper Koyukuk Valley, Yukon Flats and Surrounding Uplands, Central Interior, Northern Arctic Coast, Chukchi Sea Coast, Lower Kobuk and Noatak Valleys, Baldwin Peninsula and Selawik Valley, Northern and Interior Seward Peninsula, Eastern Norton Sound and Nulato Hills, Yukon Delta, Lower Yukon Valley, Lower Koyukuk and Middle Yukon Valleys, Bristol Bay, and the Kuskokwim Delta.

A winter weather advisory is in effect for the St Lawrence Island and Bering Strait Coast, Kodiak Island, Western Kenai Peninsula, Western Prince William Sound, and the Copper River Basin.

A blizzard warning is in effect for Northeast Prince William Sound.

A winter storm warning is in effect for Misty Fjords, Haines Borough and Lynn Canal, and the Taiya Inlet and Klondike Highway.

A flood advisory is in effect for the Susitna Valley.

A wind chill warning is in effect for the Southeastern Brooks Range, Upper Kobuk and Noatak Valleys, Eastern Beaufort Sea Coast, and the Central Beaufort Sea Coast.

For the most current weather Watches / Warnings / Advisories go to: <http://www.weather.gov/arh/>

### **Avalanche**

Moderate (2) Avalanche Conditions exist for Turnagain Pass. **Dangerous avalanche conditions exist. Careful snowpack evaluation, cautious route-finding and conservative decision-making is essential.**

The Chugach National Forest Avalanche Information Center page is located at <https://www.cnfaic.org/>

### **Spills of Oil and Hazardous Substances**

The ADEC Spill Prevention and Response page is located at <http://dec.alaska.gov/spar/ppr/spill-information/response/>

### **Alaska Cyber Security Information**

State Employees may sign up for cyber security notifications and alerts at <https://oit.alaska.gov/Security>

**The Next Situation Report:** will be 30 December 2019 at 8:00 am. A significant change in the situation or the threat level will prompt an interim report.

This report is posted on the internet at <https://ready.alaska.gov/sitrep>. To register for email distribution, go to <http://list.state.ak.us/mailman/listinfo/dhsem.situation.report>. Direct questions regarding this report to the SEOC at 907-428-7100 or [seoc@alaska.gov](mailto:seoc@alaska.gov).